



## **DENALI Plow Mount MA11127 Yamaha Grizzly 550/700**

Thank you for purchasing our DENALI plow mount. You now own a premium custom plow mount to allow you to use your plow with your ATV. Please note the following instructions and heed all warnings.

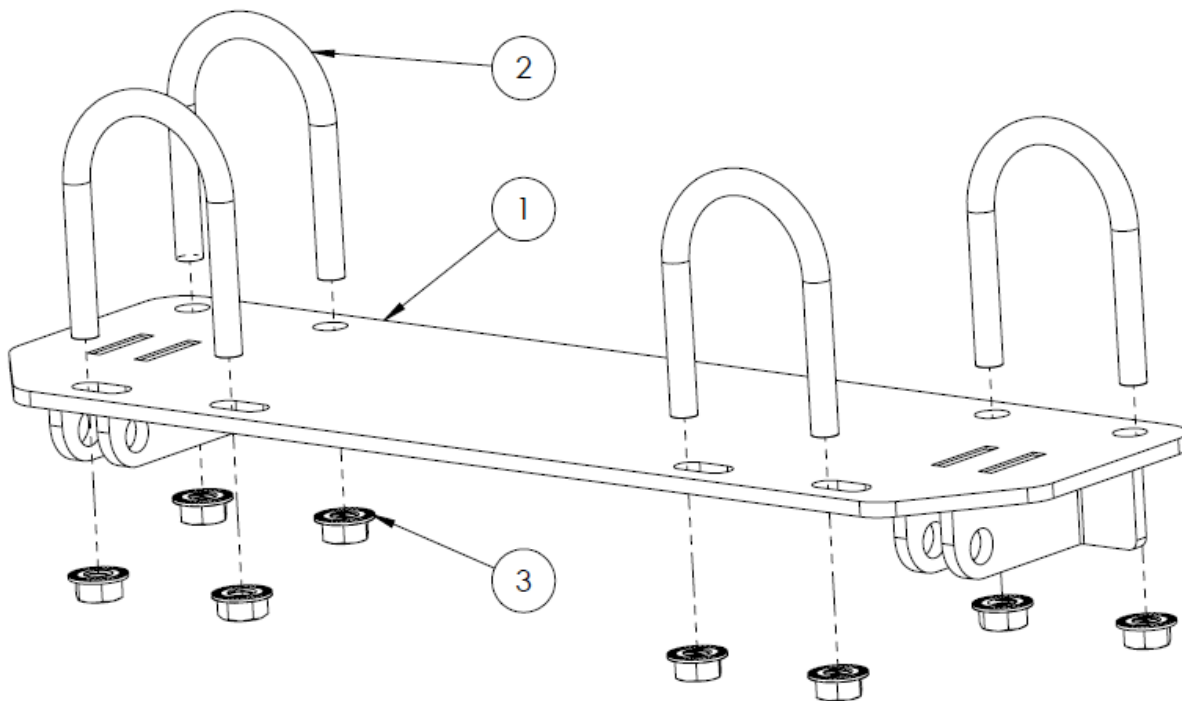
- Your ATV and/or plow system can cause death or injury, please use caution and common sense when operating your unit.
- Read your Plow Operator Manual, your Winch Operator Manual, and all warning labels before operating your ATV.
- Operate your ATV at a walking speed with the blade installed. Do not exceed 5 mph (8 km/h), even with the blade up.
- Do not operate the ATV on slopes greater than 10 degrees with the plow installed.
- Always lower the plow to the down position before leaving your ATV unattended.

**SEVERE INJURY OR DEATH MAY RESULT IF YOU ARE NEGLIGENT.**

Please verify that all hardware and parts are included in your package.

**Kit Contents:**

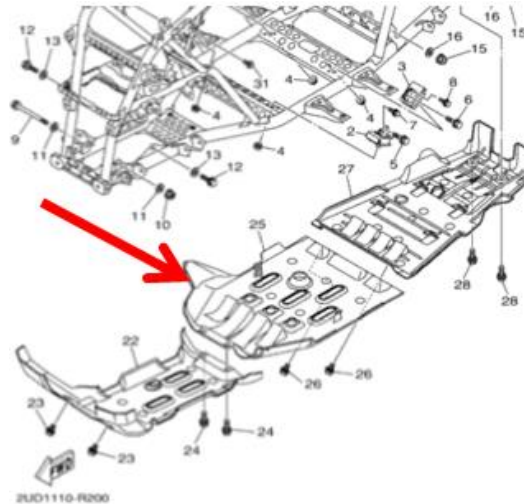
Item Number	Qty	Description
1	1	MA11127 Plow Mount
2	4	5/16"x18x1.75"IDx2 11/16" Fastenal #: 42024
3	8	5/16"x18 Serrated Flange Nuts



**Figure 1**

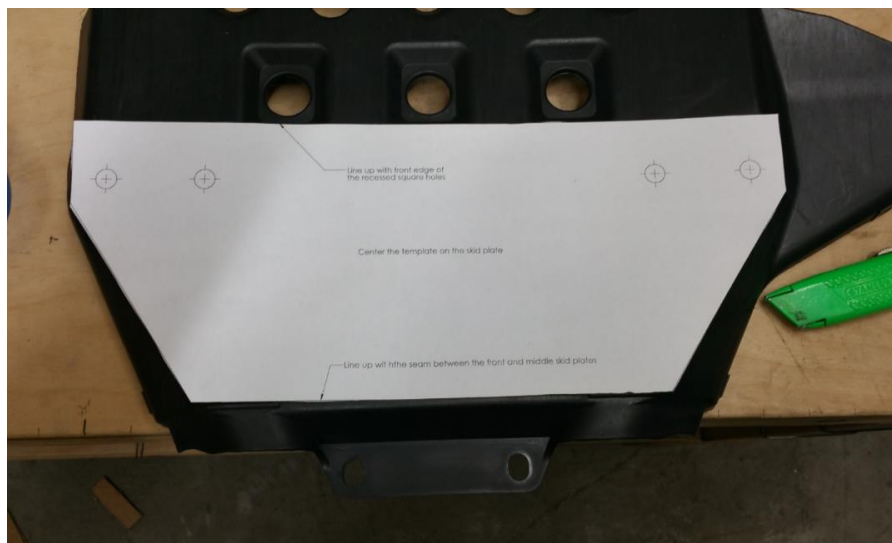
## Yamaha Grizzly Plow Mount Installation

1. Remove the middle plastic skid plate below the engine as shown in Figure 2.



**Figure 2**

2. Cut out Template #1 and put it into place on the middle plastic engine guard as shown in Figure 3. (*The plastic skid plate may vary from model to model. Use Figure 4, which shows the mount installed without the plastic skid plate, as a guide to verify hole drilling locations.*)

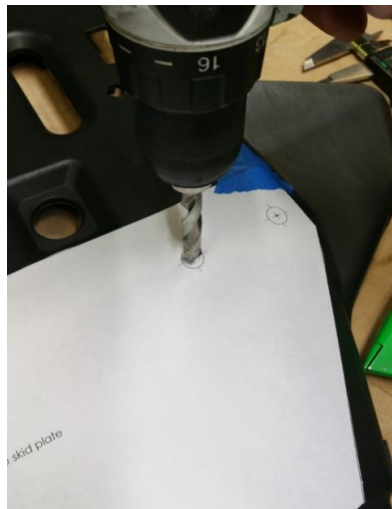


**Figure 3**



**Figure 4**

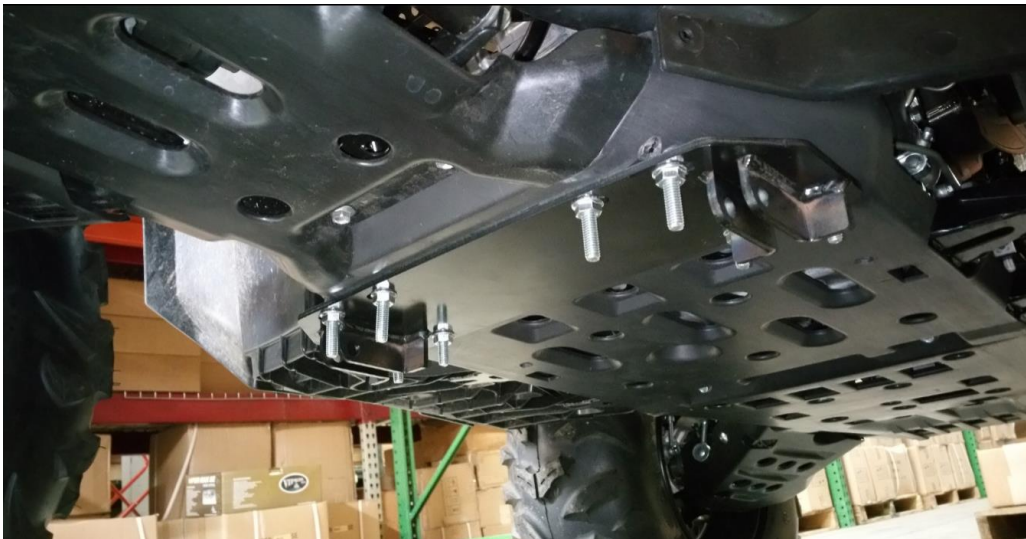
3. Drill the four (4) rear holes as shown in Figure 5 and remove the template from the skid plate.



**Figure 5**

4. Reinstall the skid plate to the machine.

5. Insert two (2) of the supplied 5/16"x18x1.75IDx2 11/16" U-Bolts (part #2) from the top of the machine over the frame, through the plastic, through the rear holes of the MA11127 Plow Mount (part #1) and secure to the frame using four (4) of the supplied 5/16"x18 Serrated Flange Nuts (part #3).
6. Hand snug the nuts down, but don't tighten yet. Using the front four (4) holes of your mount plate as a template, drill holes in the plastic. Use the remaining 5/16"x18x1.75IDx2 11/16" U-Bolts (part #2) and 5/16"x18 Serrated Flange Nuts (part #3) to secure the front of the Plow Mount to the frame.
7. Verify the Plow Mount is placed correctly, tighten down all hardware, and attach the plow using the quick release pin included with DENALI Plow Kits.



**Completed View**

## After First Time Use

After the first use of your plow, check and retighten all hardware at least once, in case your frame has flexed and the Plow Mount has loosened.